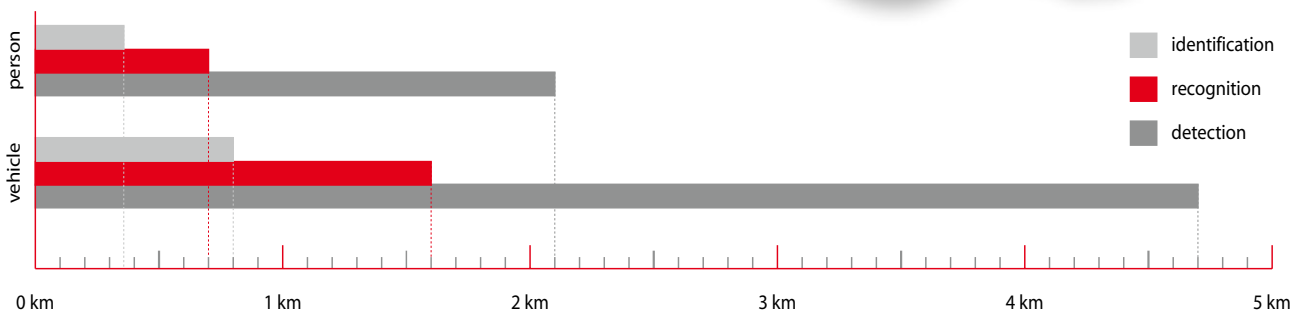


ViewIR® 60 sl

Lightweight binocular mid-range thermal imaging system



Border Police



Surveillance

Outstanding performance features

- Rugged design, low weight
- Uncooled microbolometer detector, low noise level
- (384 x 288) IR pixels
- Binocular OLED viewfinder
- Light intensive 61 mm lens
- Frame rate 8.95 Hz
- Protection rating IP67
- Internal image and video storage
- External video interface

Users and fields of application

- Police
- Border Police, Customs
- Intelligence Service
- Disaster relief organisation
- Rescue services
- Security services
- Site protection, surveillance and reconnaissance
- SAR missions, mountain rescue service
- Civil defense and emergency management

ViewIR® 60 sl

Lightweight binocular mid-range thermal imaging system

The newly developed binocular thermal imaging system ViewIR® 60 has been designed for numerous governmental applications. The uncooled microbolometer detector with (384 x 288) IR pixels allows detecting people up to a distance of 2.1 km and vehicle detection up to 4.7 km. The handy design and fast boot time of only 20 seconds ensure a quick start-up. The motorized focus allows precise and quick capturing of the monitored situation very efficiently.

The individually focusable eyepieces of the binocular OLED viewfinder provide an excellent overview and high-contrast image. Brightness and contrast can be adjusted both manually and automatically. Snapshots and video files can be saved on the internal SD card for download via the supplied USB interface. A remote control of ViewIR® 60 is possible via RS232C interface, video-image files can be transported by utilizing an analogue output interface.

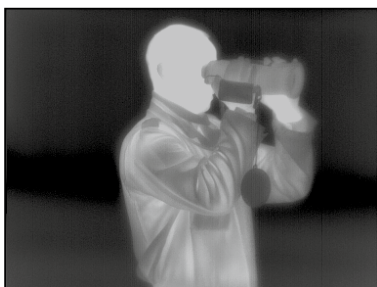
Technical specifications

Spectral range	(7.5 ... 14) μm
Detector, Detector format (pixel)	Uncooled microbolometer Focal Plane Array, (384 x 288)
Temperature resolution @ 30 °C	Better than 0.08 K
IR-frame rate	8.95 Hz
Lens (field of view)	61 mm (9 x 6.75)°
Electronic zoom	2x
Focus	Motorized
Detection range (person)	Up to 2.1 km
Detection range (vehicle)	Up to 4.7 km
Viewfinder	Binocular, monochrome with eye cup
Type of viewfinder display (pixel)	OLED (852 x 600)
Power supply	High Capacity Li-Ion battery (fast rechargeable)
Rechargeable battery capacity per charge	More than 3 h
Operation temperature	(-40 ... 60) °C
Dimensions	(196 x 166 x 63) mm
Weight (without battery)	1.5 kg

Design and specification are subject to permanent development; subject to changes in the sense of technical progress.

Standard accessories

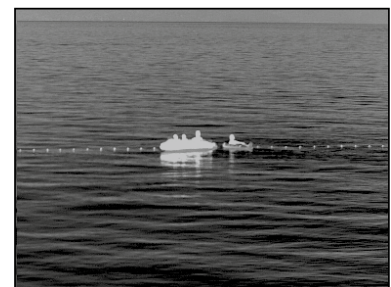
- Robust, water-tight transport case
- 2 pcs. of high capacity Li-Ion rechargeable batteries
- Instant charger
- Plug in mains supply (100 ... 240) VAC/15 VDC (2A)
- Multi-connector cable (video interface (cinch)), USB, RS232/422
- User manual and brief operating instructions



Investigation



Site protection



SAR mission